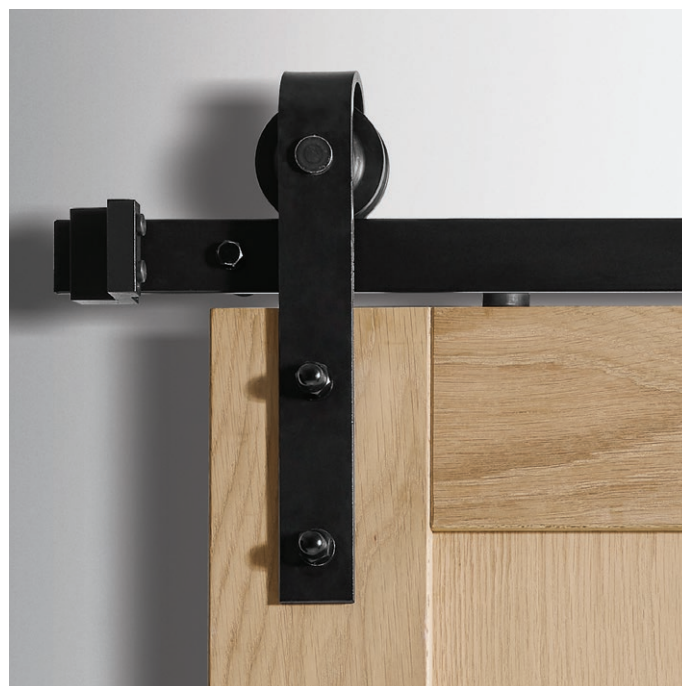
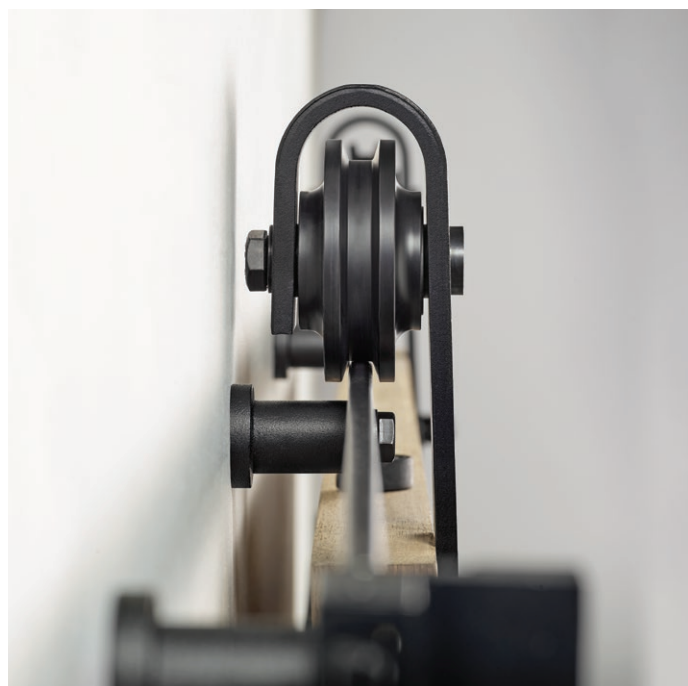


INSTALLATION INSTRUCTIONS



IMPORTANT INFORMATION

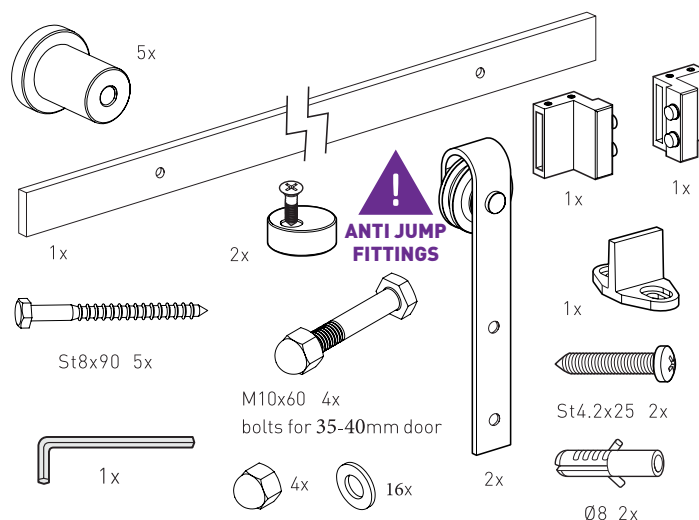
To prepare for the installation of your Moda Barn Door Hardware, read these instructions.

- Doors suited to internal applications only.
- Kits cater for single door installation only.
- 2 kits are required for double door installations. Track Joiners are sold separately.
- Maximum door weight 80kg.
- Where wall fixing locations (i.e. timber studs) do not align with the track fixing points, a timber batten must be installed to provide the necessary wall support.
- Follow these instructions to ensure safe operation of this product post installation.

These instructions should be read in conjunction with any applicable product installation instructions and the Door Care and Maintenance Guide.

ITEMS REQUIRED

- 5 x Wall Spacers & fixings
- 1 x Track Bar (2000mm W x 40mm H x 6mm D)
- 2 x Round Anti-Jump Pins
- 2 x Track Rollers & fixings
- 1 x Left Hand Roller Stopper
- 1 x Right Hand Roller Stopper
- 1 x Floor Mounted Guide
- 1 x Allen Key
- Timber & Masonry fixings



INSTALLATION INSTRUCTIONS

DOOR GUIDE OPTIONS

- The Moda Barn Door hardware kit includes a Floor Mounted Guide as standard.
- A Wall Mounted Guide is available for hard floors such as tile, concrete, stone or marble. This is sold separately.
- To accommodate the floor guide, doors will require a groove in the bottom rail measuring 15mm H x 7mm W.



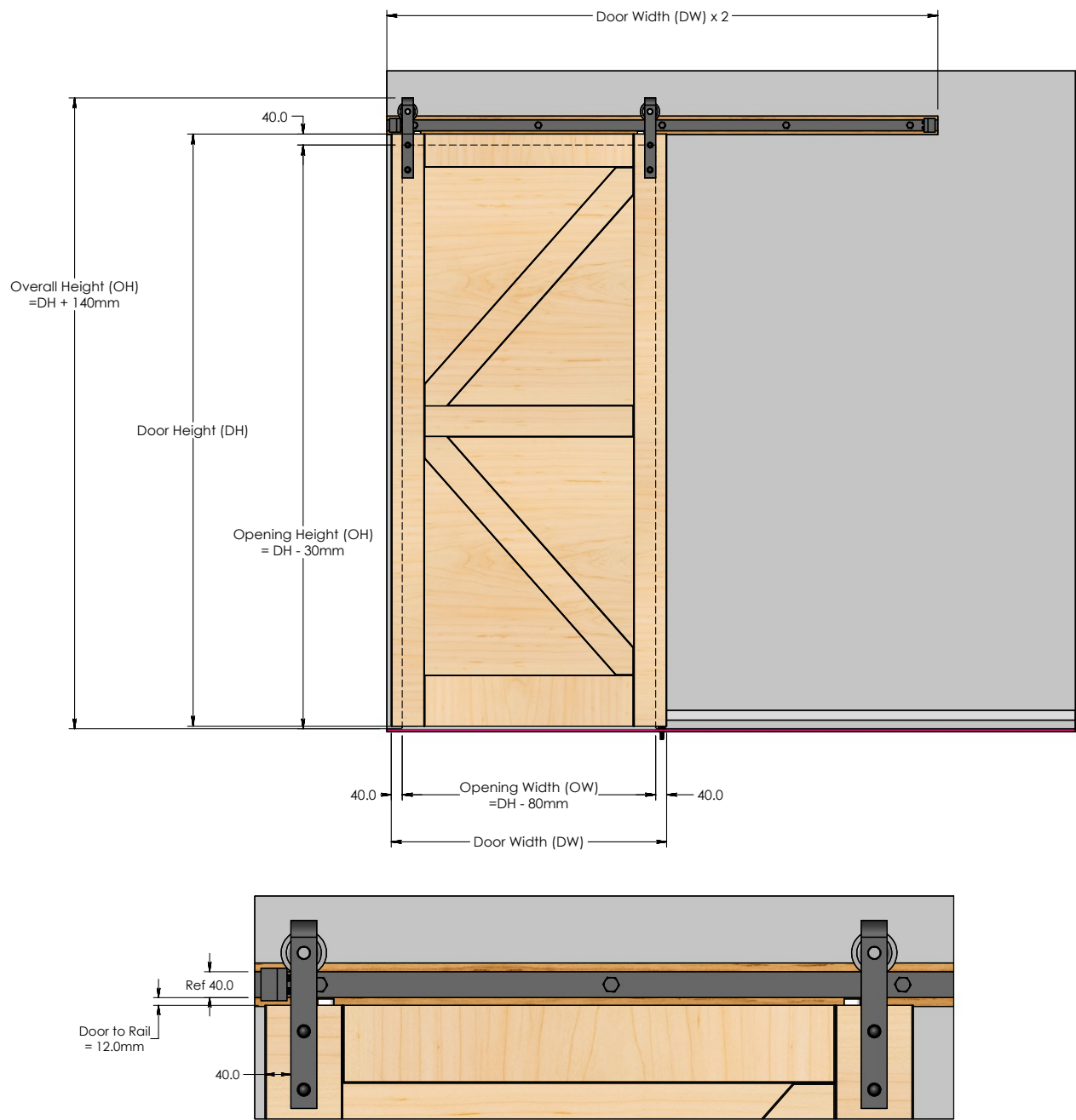
Floor Mounted Guide
Standard kit inclusion



Wall Mounted Guide
Sold separately

DIMENSIONAL DETAIL

- Care must be taken to consider the ceiling cornice when planning the installation of the Moda Barn Door solution.



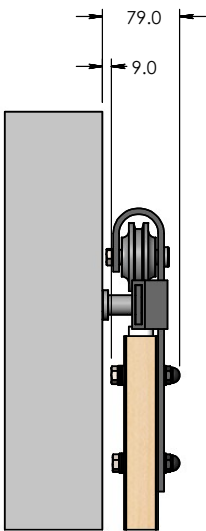
INSTALLATION INSTRUCTIONS

FIXING REQUIREMENTS

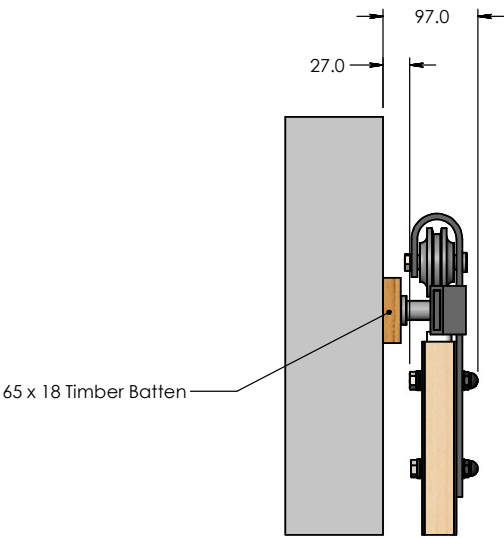
PLASTER WALL FIXING

- Where a timber stud cannot be located, a timber batten is used on plaster walls to provide sufficient surface strength to support the weight of track and door without compromising the wall surface.
- A timber batten is also used to provide support that aligns with the wall fixing points in the track (i.e. a plaster wall with timber frame not in alignment with the track fixing positions).

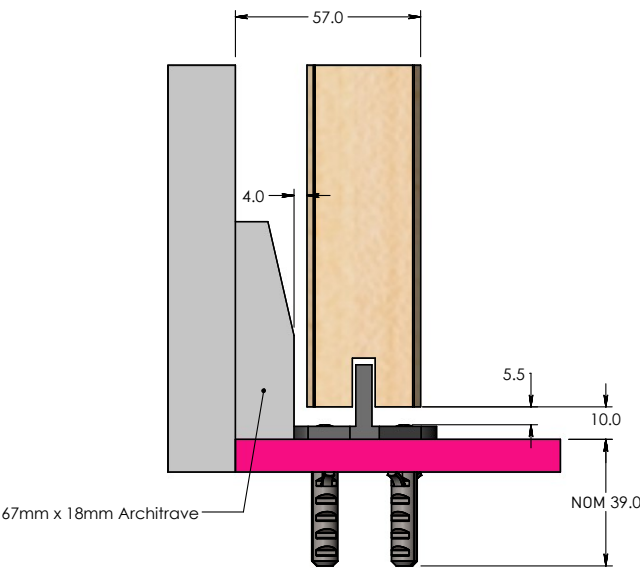
WITHOUT TIMBER BATTEN



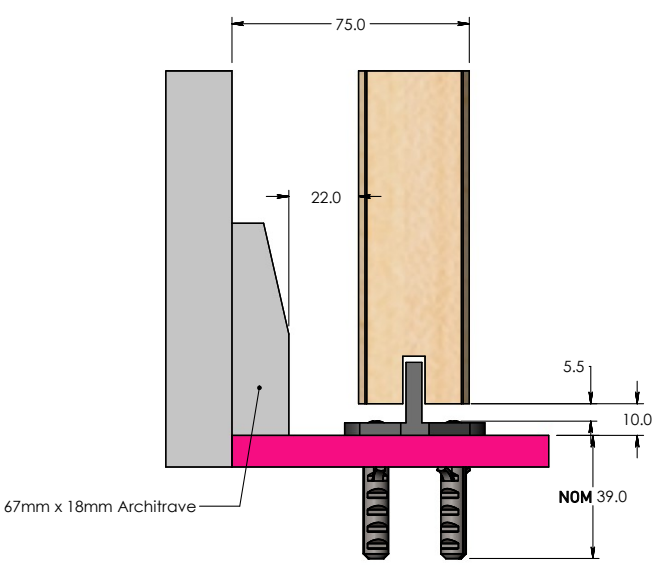
WITH TIMBER BATTEN



WITHOUT TIMBER BATTEN
& FLOOR GUIDE

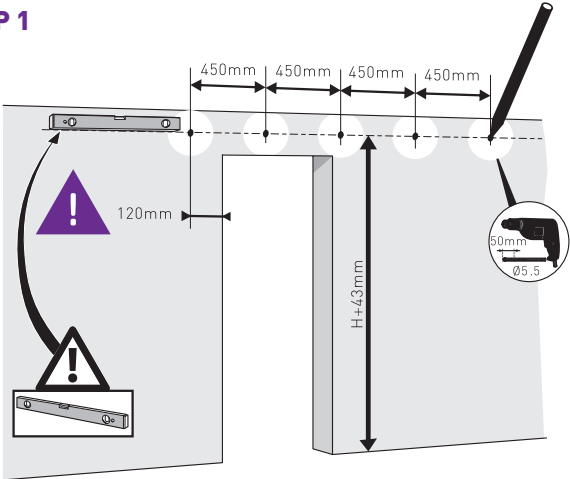


WITH TIMBER BATTEN
& FLOOR GUIDE

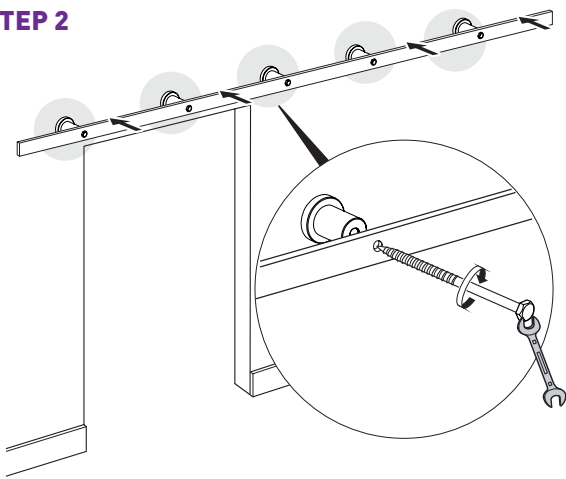


INSTALLATION INSTRUCTIONS

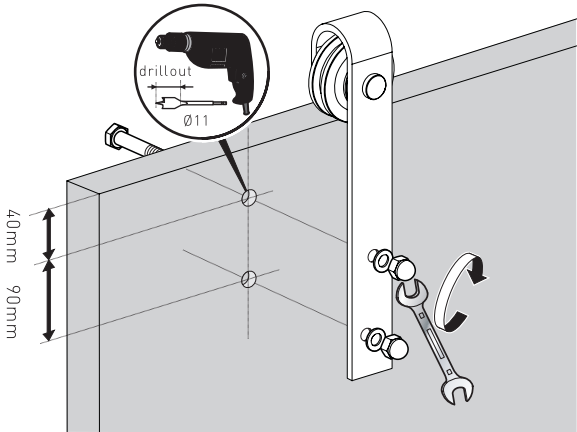
STEP 1



STEP 2

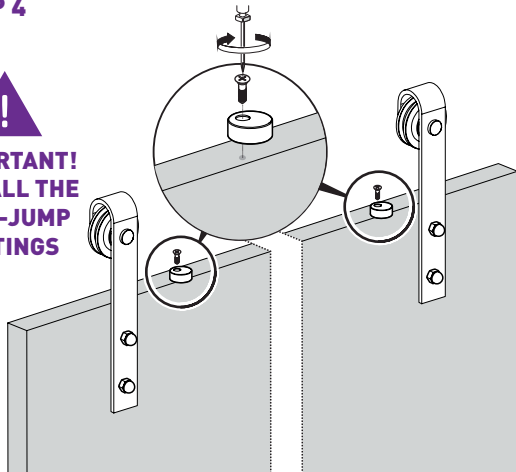


STEP 3

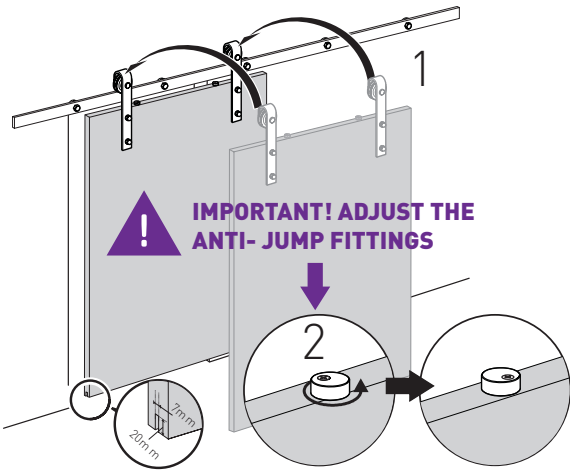


STEP 4

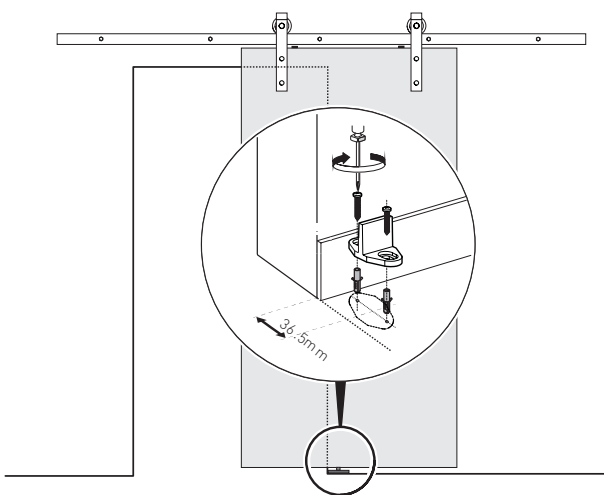
IMPORTANT!
INSTALL THE
ANTI-JUMP
FITTINGS



STEP 5

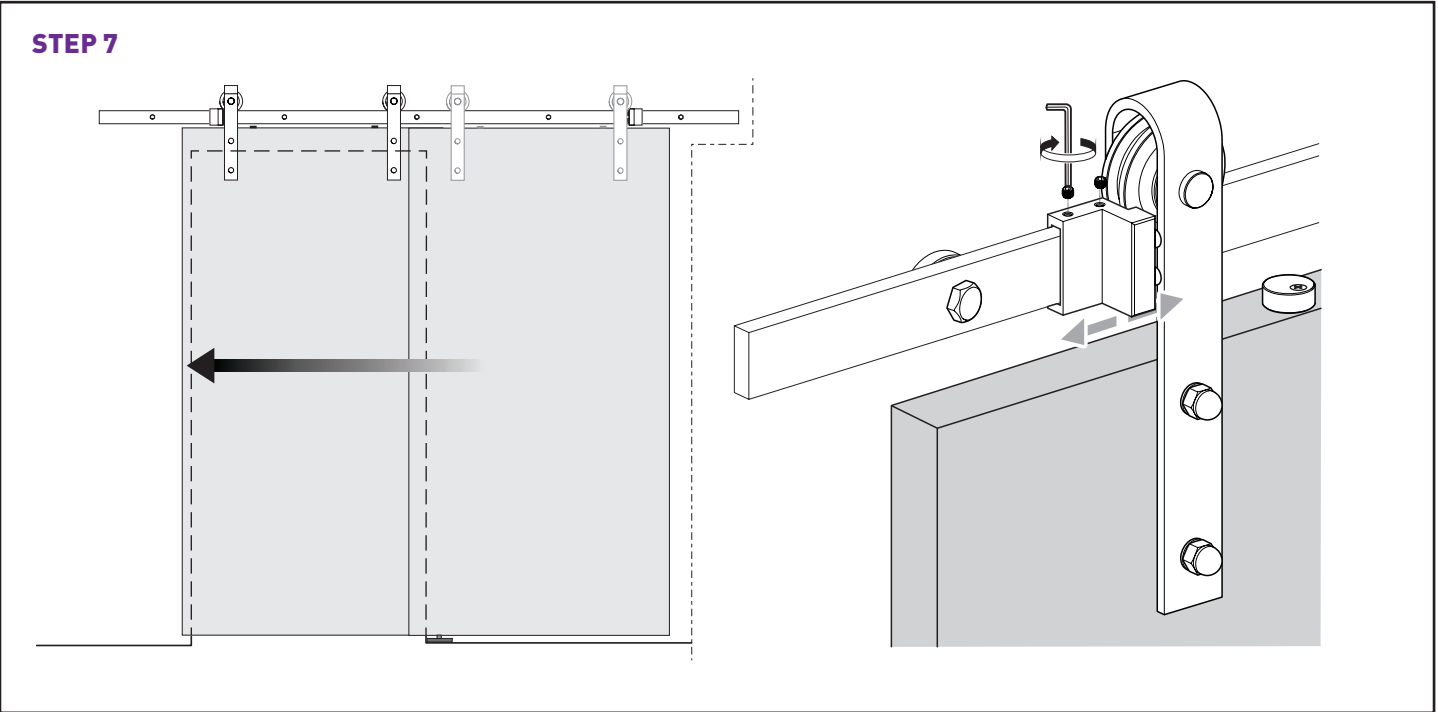


STEP 6

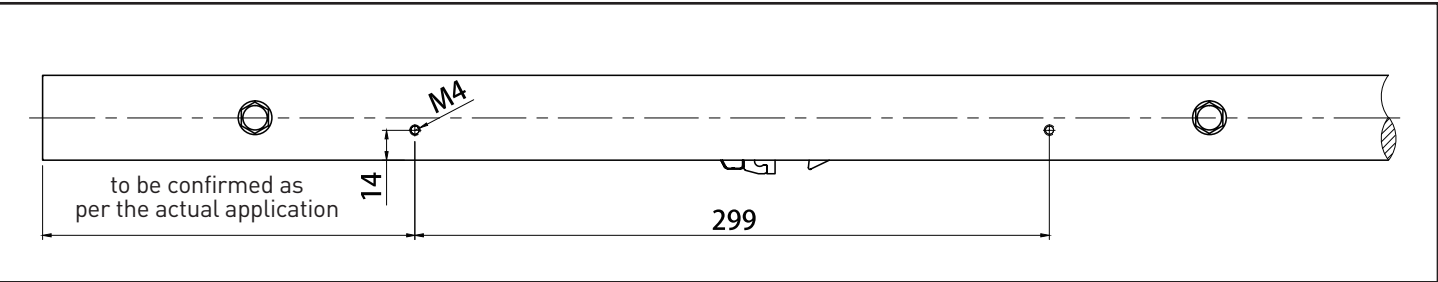
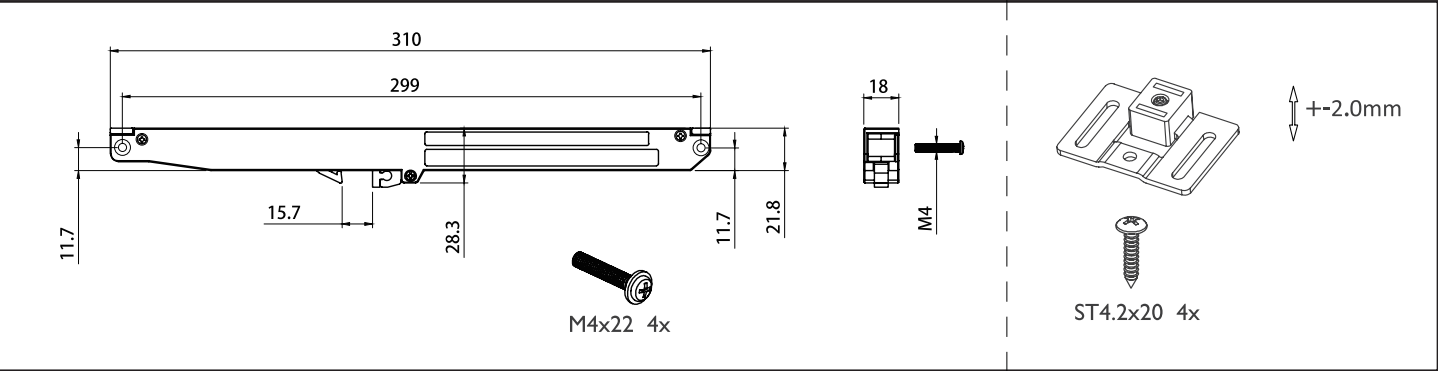


INSTALLATION INSTRUCTIONS

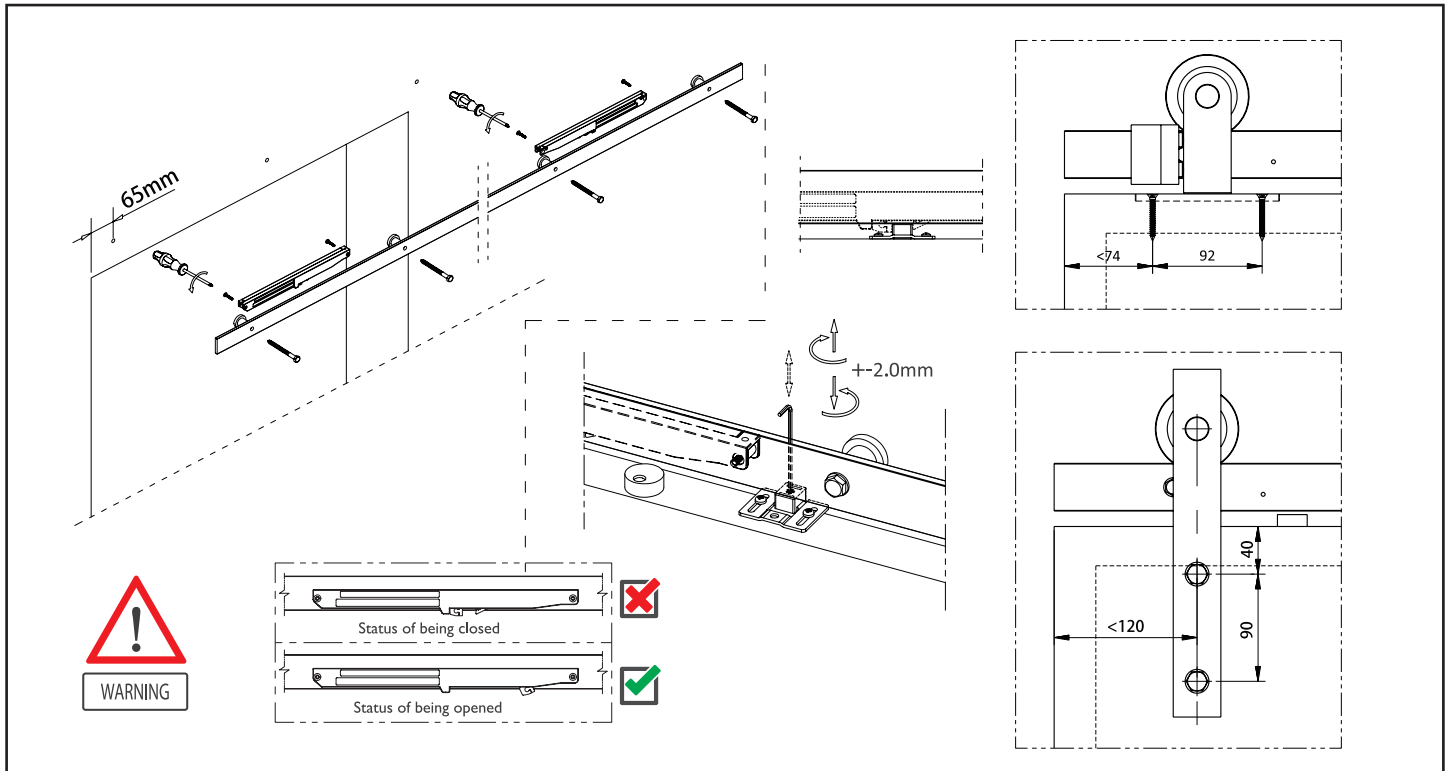
STEP 7



SOFT-CLOSER INSTALLATION



INSTALLATION INSTRUCTIONS

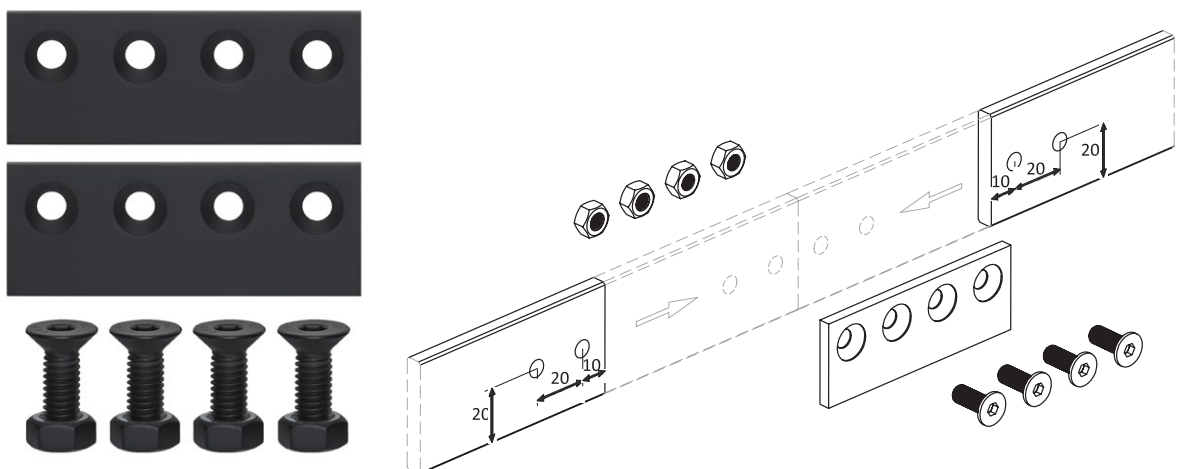


DOUBLE DOOR APPLICATIONS

The Track Joiner hardware is required when installing double door configurations.

The Track Joiner provides a secure connection between the two lengths of track with a neat finish.

- The Track Joiner plates are sold separately.
- The Track Joiner hardware is supplied with the required fixings for installation.
- To accommodate the installation of the Track Joiner you will be required to drill 4 x holes in the Moda Barn Door Track.



FAILURE TO ADHERE TO INSTALLATION INSTRUCTIONS WILL VOID WARRANTY.
For full Terms and Condition of Warranty visit www.corinthian.com.au/about/warranty

Corinthian Industries (Australia) Pty Limited is a subsidiary of JELD-WEN Australia Pty Limited. Whilst the utmost care is taken to ensure the accuracy of the information contained herein, it is provided in the understanding that the company shall under no circumstances be liable for any injuries, expenses or other losses which may in any way be attributable to the use or adoption of such data and/or design details. All dimensions indicated are nominal only. Corinthian Doors reserves the right to alter or amend without prior notice data and design details specified herein. Photographs or illustrations may not exactly depict the design or specification and may vary to actual. Doors and products are supplied unfinished unless otherwise specified. www.corinthian.com.au JELD0449 FEB 22.